

BLAUPUNKT



TIRE PRESSURE
MONITORING SYSTEM
TPMS 2.0



Enjoy it.

SPECIFICATION

Sensor

Operating frequency	433.92MHz
Battery voltage	1.8V ~ 3.3V
Battery lifetime	1-year
Operating temperature	-20°C ~ 60°C
Pressure range	0~3.5 Bar / 0~50 PSI

Display

Operating frequency	433.92MHz
Operating voltage	3.7V
Operating temperature	-20°C ~ 70°C

Default value

High pressure value	3.0 Bar / 43 PSI
Low pressure value	1.8 Bar / 26 PSI
High temperature value	68°C ~ 80°C

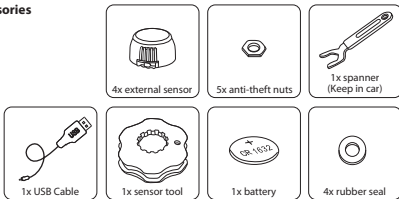
Precision

Temperature	+/-2°C
Pressure	0.1 Bar / 1.5 PSI

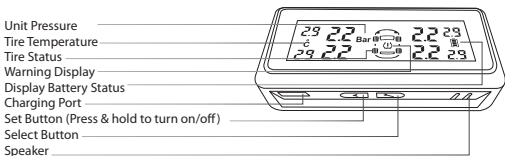
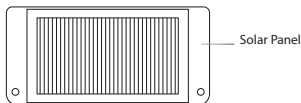
Air pressure unit

1 Bar = 14.5 PSI = 100 Kpa = 1.02Kgf/cm2

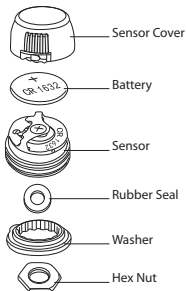
Accessories



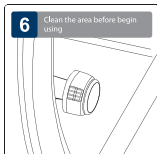
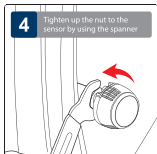
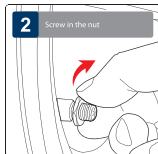
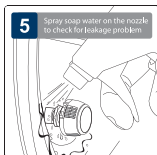
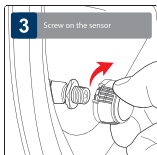
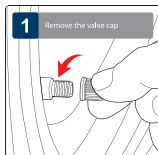
DISPLAY



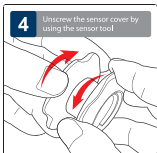
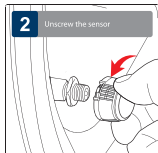
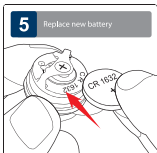
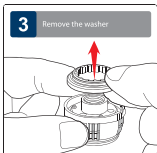
SENSOR



SENSOR INSTALLATION



SENSOR BATTERY REPLACEMENT

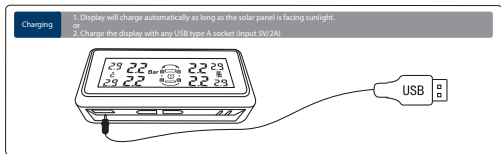
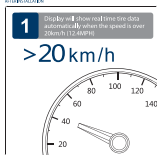


DISPLAY INSTALLATION

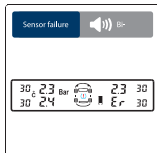
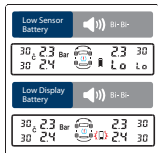
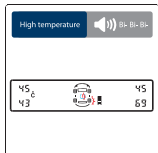
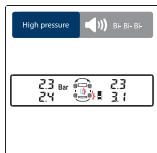
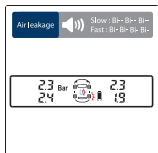
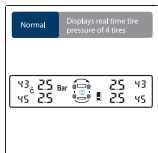


FUNCTIONAL TEST

INSTALLATION



DIFFERENT SCENARIO

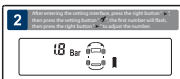


SETTING

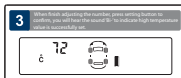
HIGH PRESSURE VALUE SETTING



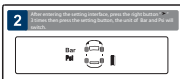
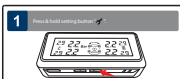
LOW PRESSURE VALUE SETTING



HIGH TEMPERATURE VALUE SETTING



UNIT SWITCHING



You will hear the sound 'bi' to indicate that unit switching successful.







RESET SETTING



SETTING

SENSOR PAIRING

(Sensor pairing are required only when the tires or the sensors has switched location or be replaced)

1 Press "P" and "S" simultaneously for at least 5 seconds to enter into pairing mode. (Pairing order: Left Front → Right Front → Left Rear → Right Rear). 	4 When system receives the signal, you will hear "B-B-B" which indicates successful sensor pairing. 
2 Left front tire icon began to flash. 	5 Every time display flashes the next location, repeat steps 3-4 to pair the rest of the sensors. 
3 Immediately get the sensor to learn the code and wait for 5-8 seconds. 	6 After the last tire (right rear) is paired with the sensor, the display will return to the original interface. 

TROUBLESHOOTING

1. Air leakage after sensor installation

The tire valves may not be universal standard, please check with the local workshop.

2. No tire data are displayed after completing installation

- Display may have run out of battery. Charge display with USB cable.
- Tire sensor will began transmitting data to display when the car moves beyond 20km/h.

3. Missing/lost sensor

Please purchase new sensor.

4. Sensor battery low

Please replace with battery CR1632.

5. Change of tire location

Please reprogram the corresponding sensors.

Note

- TPMS (Tire Pressure Monitoring System) is designed for monitoring tire irregularities. Drive has responsibility to maintain tires regularly.
- Driver should react promptly once warning from this unit alerted.
- Blaupunkt does not guarantee or assumes liability for the loss of sensors.
- All sensors in this unit have been pre-set individually for each tire in the factory.
- Whenever the location of tire changed, the sensor must be reprogrammed.
- The display will turn off automatically 60-sec after the car stopped moving.

